

WHERE TRADITION MEETS TRANSFORMATION



YOUR FAMILY. YOUR FUTURE. OUR PASSION.

Across New Jersey, Monarch Communities and Brandywine share one vision — to create warm welcoming environments where care meets connection and every day brings new meaning.

With 21 communities throughout the state, we invite you to experience the best in assisted living and memory care — rooted in compassion, designed for living beautifully.

For more information and list of all of our communities, please visit: monarchcommunities.com and brandycare.com



BRANDYWINE

BRANDYWINE by  MONARCH COMMUNITIES

NEW JERSEY LOCATIONS

- | | | |
|--|--|---|
| 1 Monarch Bella Terra
732.730.9500 | 8 Brandywine Livingston
973.251.0600 | 15 Brandywine Reflections
732.785.3370 |
| 2 Brandywine Brandall Estates
609.926.4663 | 9 Brandywine Mahwah
201.800.8070 | 16 Brandywine Serenade at Princeton
609.430.4000 |
| 3 Brandywine Reflections at Colts Neck
732.303.3100 | 10 Brandywine Middlebrook Crossing
732.868.8181 | 17 Brandywine Summit
908.522.8852 |
| 4 Brandywine The Gables
732.836.1400 | 11 Brandywine Moorestown Estates
856.778.0600 | 18 Brandywine The Sycamore
732.212.2600 |
| 5 Brandywine Governor's Crossing
732.786.1000 | 12 Brandywine Mountain Ridge
908.754.8180 | 19 Brandywine Toms River
732.240.0043 |
| 6 Brandywine Haddonfield
856.429.5500 | 13 Brandywine Princeton
732.329.8888 | 20 Brandywine Voorhees
856.424.0004 |
| 7 Brandywine Howell
732.719.0100 | 14 Brandywine Pennington
609.730.9922 | 21 Brandywine Wall
732.282.1910 |

Call one of our NJ locations today to schedule your private tour.



HEALTHCARE REFERRAL DIRECTORY

Hospital Healthcare Referral DIRECTORY

BROUGHT TO YOU BY  Senior LIVINGGUIDE.com

- NEW JERSEY STATEWIDE DIRECTORY _____ VOLUME 3, ISSUE 2
- ALZHEIMER'S ASSOCIATION _____ 800-272-3900
 - AMERICAN DIABETES ASSOCIATION _____ 800-342-2383
 - AMERICAN HEALTH CARE ASSOCIATION _____ 202-842-4444
 - AMERICANS WITH DISABILITIES _____ 800-514-0301
 - CENTERS FOR MEDICARE & MEDICAID SERVICES (CMS) 800-633-4227
 - NATIONAL ASSOCIATION OF AREA AGENCIES ON AGING 202-872-0888
 - SOCIAL SECURITY ADMINISTRATION _____ 800-772-1213
 - VETERAN AFFAIRS BENEFITS _____ 800-827-1000

THIS INFORMATION WAS SUPPLIED BY THE STATE OF NEW JERSEY

Information contained herein has been furnished by facility/service owners, managers, agents and government data bases. Fairfax Publishing Company, LLC, and Senior Living Guide do not make any representations as to opinions and facts. All terms and conditions are subject to change. Senior Living Guide retains all rights reserved by copyright 2025 Fairfax Publishing Company, LLC. This publication or parts thereof must not be reproduced in any form without the written permission of the publisher.



AVAILABLE ANYWHERE YOU ENJOY MUSIC OR PODCASTS

Spotify, Apple podcasts, Google podcasts, Alexa & more!

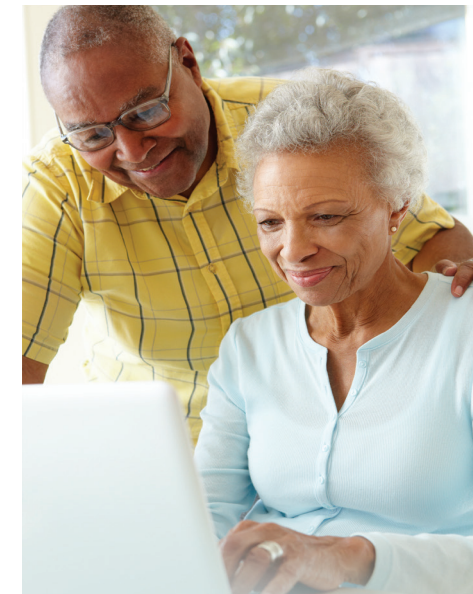
seniorlivingguide.com/podcasts

VIVA LA VIE at Mira Vie

At Mira Vie Senior Living, every moment is an opportunity to experience joy, connection and a zest for life.



 MiraVieSeniorLiving.com



Searching for Senior Housing or Services? SeniorLivingGuide.com has the information you need.

 Senior LIVINGGUIDE.com

WHERE TRADITION MEETS TRANSFORMATION



YOUR FAMILY. YOUR FUTURE OUR PASSION.

Across New Jersey, Monarch Communities and Brandywine share one vision — to create warm welcoming environments where care meets connection and every day brings new meaning. With 21 communities throughout the state, we invite you to experience the best in assisted living and memory care — rooted in compassion, designed for living beautifully.

For more information and list of our communities, please visit: monarchcommunities.com and brandycare.com

VIVA LA VIE

at Mira Vie

INDEPENDENT LIVING | ASSISTED LIVING | MEMORY SUPPORT

At Mira Vie, we capture the essence of Viva La Vie by making every moment meaningful and enriching every experience with more joy and possibilities. Our customized approach to senior living keeps older adults engaged and connected. It's the formula for a full life.

CALL TO SCHEDULE A VISIT TODAY!

Mira Vie at Brick

(848) 345-2394
458 Jack Martin Boulevard
Brick, NJ 08724

Mira Vie at Brookfield

(908) 883-3723
1 Brookfield Court
Belvidere, NJ 07823

Mira Vie at Clifton

(862) 418-1745
782 Valley Road
Clifton, NJ 07013

Mira Vie at East Brunswick

(848) 315-2149
606 Cranbury Road
East Brunswick, NJ 08816

Mira Vie at Fanwood

(908) 379-0694
295 South Avenue
Fanwood, NJ 07023

Mira Vie at Forsgate

(848) 272-7350
319 Forsgate Drive
Monroe Township, NJ 08831

Mira Vie at Green Knoll

(908) 257-8061
680 Route 202/206 North
Bridgewater, NJ 08807

Mira Vie at Manalapan

(848) 246-2896
445 US-9
Manalapan, NJ 07726

Mira Vie at Montville

(862) 362-1519
165 Changebridge Road
Montville, NJ 07045

Mira Vie at Tinton Falls

(848) 216-8456
1 Hartford Drive
Tinton Falls, NJ 07701

Mira Vie at Toms River

(848) 253-3949
1657 Silverton Road
Toms River, NJ 08753

Mira Vie at Warren

(908) 263-1224
274 King George Road
Warren, NJ 07059

Mira Vie at West Milford

(657) 534-7670
197 Cahill Cross Road
West Milford, NJ 07480



MIRA VIE SENIOR LIVING
A DISTINCTIVE LIVING COMMUNITY



MiraVieSeniorLiving.com

HOME HEALTH AGENCIES

ATLANTIC COUNTY

ATLANTICARE HOME HEALTH (609) 484-7300
HOLY REDEEMER HOME CARE NJ SHORE (609) 761-0300

BERGEN COUNTY

AMEDISYS HOME HEALTH (201) 342-6311
ASCEND HOME HEALTH (201) 358-2666
HOLY NAME HOME CARE (201) 833-3000
VALLEY HOME CARE INC. (201) 291-6000

BURLINGTON COUNTY

MERCER CARE (609) 227-2727
MOORESTOWN VISITING NURSE ASSOCIATION (856) 552-1300
VIRTUA HOME CARE AT WEST JERSEY (856) 581-7200

CAMDEN COUNTY

BAYADA HOME HEALTH CARE, INC. (856) 354-2022
HOLY REDEEMER HOME CARE NJ SOUTH (856) 939-9000
JEFFERSON HOME CARE (856) 566-2000

CAPE MAY COUNTY

CAPE REGIONAL HOME HEALTH CARE, LLC (609) 465-1205

CUMBERLAND COUNTY

BAYADA AT INSPIRA, HOME HEALTH AND HOSPICE (856) 293-7909

ESSEX COUNTY

BARNABAS HEALTH HOME CARE AND HOSPICE (973) 243-9666
BAYADA HOME HEALTH CARE, INC. (973) 535-0543
PATIENT CARE (973) 243-6299
PROMISE CARE NJ (973) 378-1000

HUDSON COUNTY

BAYADA HOME HEALTH CARE, INC. (201) 377-6000
BAYONNE VISITING NURSE ASSOCIATION (201) 339-2500
PROMISE CARE, NJ (201) 418-6800

HUNTERDON COUNTY

HUNTERDON MEDICAL CENTER HOME HEALTH (908) 788-6138

MERCER COUNTY

PENN MEDICINE HOME HEALTH PRINCETON HEALTH (609) 497-4900
VNA HOME CARE OF MERCER COUNTY, INC. (609) 695-3461

MIDDLESEX COUNTY

AHACKENSACK MERIDIAN HEALTH JFK AT HOME (732) 317-5777
ROBERT WOOD JOHNSON VISITING NURSES, INC. (732) 224-6991

MONMOUTH COUNTY

HACKENSACK MERIDIAN HEALTH AT HOME MONMOUTH CO. (732) 751-3700
SEABROOK HOME HEALTH AGENCY (732) 643-2000

MORRIS COUNTY

BATLANTIC VISITING NURSE (973) 379-8400
CEDAR CREST VILLAGE, INC HOME HEALTH DEPT (973) 831-3717
VISITING NURSE ASSOC OF NO. NEW JERSEY, INC (973) 451-4100

OCEAN COUNTY

BAYADA HOME HEALTH CARE, INC. (732) 350-2355
HACKENSACK MERIDIAN HEALTH AT HOME OCEAN CO. (732) 206-8100
VNA OF CENTRAL JERSEY HOME CARE & HOSPICE (732) 818-6872

PASSAIC COUNTY

PATIENT CARE (973) 365-5200
VISITING HEALTH SERVICES OF NJ (973) 256-4636

SALEM COUNTY

SALEM HOME HEALTH (856) 678-8500

SOMERSET COUNTY

COMMUNITY VNA (908) 725-9355
FELLOWSHIP VILLAGE (908) 829-6399
VNA OF SOMERSET HILLS - HOME HEALTH (908) 766-0180

UNION COUNTY

HOLY REDEEMER HOME CARE NJ NORTH (908) 352-5694

PERSONAL CARE HOME

BERGEN

ACTORS' FUND OF AMERICA, INC. (201) 871-8882
ALLENDALE ASSISTED LIVING, LLC (201) 825-0660
GERIATRIC SERVICES, INC. (201) 692-1000

BURLINGTON

MASONIC CHARITY FOUNDATION OF NJ (609) 239-3900
RIVERVIEW ESTATES REHABILITATION&SENIOR LIVING CTR (856) 829-2274
THE ESTAUGH T/A MEDFORD LEAS (609) 654-3000

CAMDEN

EMERITUS CORPORATION (856) 772-9400
IVYSTONE COMMUNITY LIVING LLC (856) 488-5557
UNITED METHODIST HOMES OF NJ (856) 854-4331

CAPE MAY

COMPLETE CARE AT VICTORIA COMMONS, LLC (609) 898-0044
OCEAN VIEW ASSOCIATES OPERATION, LLC (609) 624-3881

CUMBERLAND

H.W./WEIDCO/REN, LLC (856) 455-2100

ESSEX

GREEN HILL (973) 731-2300
HOUSE OF THE HOLY COMFORTER (973) 736-1194
LITTLE NURSING HOME, INC. (973) 744-5518
ROSEVILLE HEALTH CARE, LLC (973) 481-2200

GLOUCESTER

BH BRIGHTVIEW WOODBURY LAKE OPCO, LLC (856) 848-8777
GAYATRI RAMA ASSISTED LIVING-DEPTFORD LLC (856) 468-6824
PITMAN MANOR, INC. (856) 589-7800

HUDSON

HARBOUR VIEW SENIOR LIVING CORP (201) 867-3585

MERCER

LAWRENCE ASSISTED LIVING LLC (609) 896-0006

MIDDLESEX

THE LITTLE SERVANT SISTER (732) 634-0004

MONMOUTH

OCEAN GROVE OPERATING LLC (732) 774-1316

MORRIS

FLORHAM PARK OPERATOR LLC (973) 867-1500
MIRA VIE AT MONTVILLE OPCO LLC (973) 402-1100
PRIME HEALTHCARE SERVICES-SAINT CLARE'S LLC (973) 625-6393

OCEAN

COMPLETE CARE AT BEY LEA, LLC (732) 240-0090
SNH NJ TENANT LLC (732) 370-0444

SALEM

CARNEYS POINT REHABILITATION AND NURSING CTR, LLC (856) 299-6800

SUSSEX

GRACE ELDERCARE, LLC (973) 827-6575

UNION

CRNC OPERATING, LLC (908) 272-6660
LINDEN GARDEN ESTATES, LLC (908) 862-3399
WG CRANFORD SH, LLC (908) 709-4300

THANK YOU

to all of our healthcare providers who are making a difference in our lives

Senior LIVINGGUIDE.com

NOTES

LONG TERM CARE - NURSING HOME -cont.

FRANCIS E PARKER MEMORIAL HOME _____(732) 545-3110
FRANCIS E PARKER MEMORIAL HOME _____(732) 545-8330
GARDENS AT MONROE HEALTHCARE AND REHAB (609) 448-7036
HARTWYCK AT OAK TREE _____(732) 906-2100
MERWICK CARE & REHABILITATION CENTER ___(609) 759-6000
NEW JERSEY VETERANS MEMORIAL HOME MENLO (732) 452-4100
PARKER AT MONROE _____(732) 992-5200
PREFERRED CARE AT OLD BRIDGE, LLC _____(732) 360-2277
PROMEDICA TOTAL REHAB + (PISCATAWAY) ___(732) 917-2900
REFORMED CHURCH HOME _____(732) 607-9230
ROOSEVELT CARE CENTER _____(732) 321-6800
ROOSEVELT CARE CENTER AT OLD BRIDGE ___(732) 360-9830
ROSE MOUNTAIN CARE CENTER _____(732) 828-2400
SPRING CREEK HEALTHCARE CENTER _____(732) 826-0500
ST JOSEPH'S HOME AL & NC, INC _____(732) 750-0077
SUMMER HILL NURSING HOME _____(732) 254-8200
VENETIAN CARE & REHAB CENTER, THE ____ (732) 721-8200
VILLAGE POINT _____(732) 521-6407

MONMOUTH COUNTY

ALLAIRE REHAB & NURSING _____(732) 431-7420
ANCHOR CARE AND REHABILITATION CENTER_(732) 264-5800
APPLEWOOD ESTATES _____(732) 303-7403
ARNOLD WALTER NURSING & REHAB CENTER_(732) 787-6300
ATRIUM AT NAVESINK HARBOR, THE _____(732) 842-3400
BAYSHORE HEALTH CARE CENTER _____(732) 847-3000
CARE ONE AT HOLMDEL _____(732) 946-4200
CARE ONE AT KING JAMES _____(732) 291-3400
CARE ONE AT WALL _____(732) 556-1060
COMPLETE CARE AT MADISON, LLC _____(732) 566-6400
CONTINUING CARE AT SEABROOK _____(732) 643-2000
CORAL HARBOR REHAB AND HEALTHCARE CENTER(732) 774-8300
DE LA SALLE HALL _____(732) 530-9470
EXCEL CARE AT MANALAPAN _____(732) 446-3600
GATEWAY CARE CENTER _____(732) 542-4700
HACKENSACK MERIDIAN HEALTH NURSING & REHAB (732) 741-8811
IMPERIAL CARE CENTER _____(732) 922-3400
JERSEY SHORE CENTER _____(732) 544-1557
JERSEY SHORE POST ACUTE REHAB AND NURSING (732) 774-3550
JEWISH HOME FOR REHAB AND NURSING, THE (732) 202-1000
KING MANOR CARE AND REHAB CENTER ____ (732) 774-3500
LAUREL BAY HEALTH & REHAB CENTER ____ (732) 787-8100
MANOR, THE _____(732) 431-5200
MERIDIAN NURSING & REHAB AT SHREWSBURY (732) 676-5800
MERIDIAN NURSING AND REHAB AT OCEAN GROVE (732) 481-8300
MERIDIAN SUBACUTE REHABILITATION _____(732) 312-1800
PREFERRED CARE AT WALL _____(732) 683-8600
SPRING HILLS POST ACUTE MATAWAN _____(732) 765-5600
SUNNYSIDE MANOR _____(732) 528-9311
TOWER LODGE CARE CENTER _____(732) 681-1400
WARDELL GARDENS AT TINTON FALLS _____(732) 922-9330
WEDGWOOD GARDENS CARE CENTER ____ (732) 677-1200

MORRIS COUNTY

CARE ONE AT HANOVER TOWNSHIP _____(973) 599-7500
CARE ONE AT MADISON AVENUE _____(973) 656-2700
CARE ONE AT PARSIPPANY _____(973) 952-5300
CEDAR CREST/MOUNTAINVIEW GARDENS ___(973) 831-3504
CHATHAM HILLS SUBACUTE CARE CENTER _____(973) 822-1500
CHESHIRE HOME _____(973) 966-1232
DWELLING PLACE AT ST CLARES _____(973) 989-3500
FALLSVIEW REHABILITATION & NURSING _____(973) 334-2454
GARDEN TERRACE NURSING HOME _____(973) 635-0899
HEATH VILLAGE _____(908) 852-4801
HOLLY MANOR CENTER _____(973) 543-2500

LINCOLN PARK CARE CENTER _____(973) 696-3300
LINCOLN PARK RENAISSANCE REHAB & NURSING (973) 696-3300
MERRY HEART NURSING HOME _____(973) 584-4000
MORRIS VIEW HEALTHCARE CENTER _____(973) 285-2800
MORRISTOWN POST ACUTE REHAB AND NURSING CENTER(973) 540-9800
NEW JERSEY FIREMEN'S HOME _____(973) 334-0024
OAKS AT DENVILLE, THE _____(973) 586-5000
PINE ACRES CONVALESCENT CENTER _____(973) 377-2124
REGENCY GRANDE NURS & REHAB CE _____(973) 361-5200
SYCAMORE LIVING AT EAST HANOVER _____(973) 995-6700
TROY HILLS CENTER _____(973) 887-8080

OCEAN COUNTY

ARISTACARE AT MANCHESTER _____(732) 657-1800
ARISTACARE AT WHITING _____(732) 849-4300
ATLANTIC COAST REHAB & HEALTH _____(732) 364-7100
BARNEGAT REHAB AND NURSING CENTER ____ (609) 698-1400
BARTLEY HEALTHCARE NURSING & REHAB ___(732) 370-4700
CHILDRENS SPECIALIZED HOSPITAL TOMS RIVER(732) 797-3800
COMMUNITY MEDICAL CENTER TCU _____(732) 557-8000
COMPLETE CARE AT ARBORS _____(732) 914-0090
COMPLETE CARE AT BEY LEA, LLC _____(732) 240-0090
COMPLETE CARE AT GREEN ACRES _____(732) 286-2323
COMPLETE CARE AT HOLIDAY CITY _____(732) 240-0900
COMPLETE CARE AT LAURELTON, LLC _____(732) 458-6600
COMPLETE CARE AT SHORROCK _____(732) 451-1000
COMPLETE CARE AT WHITING _____(732) 849-4400
CONCORD HEALTHCARE & REHAB CENTER ____ (732) 367-7444
CREST POINTE REHAB AND HEALTHCARE CENTER (732) 295-9300
CRESTWOOD MANOR _____(732) 849-4900
CRYSTAL SPRING CENTER LLC _____(732) 269-0500
FOUNTAIN VIEW CARE CENTER _____(732) 905-0700
HAMILTON PLACE AT THE PINES AT WHITING_(732) 849-0400
HAMPTON RIDGE HEALTHCARE AND REHAB ___(732) 286-5005
HARROGATE _____(732) 905-7070
LEISURE CHATEAU REHABILITATION _____(732) 370-8600
MERIDIAN NURSING AND REHAB AT BRICK ____ (732) 206-8000
MYSTIC MEADOWS REHAB & NURSING CENTER (609) 294-3200
ROSE GARDEN NURSING AND REHAB CENTER_(732) 505-4477
SEACREST REHAB AND HEALTHCARE CENTER_(609) 296-9292
SHORE GARDENS REHAB AND NURSING CENTER(732) 942-0800
SOUTHERN OCEAN CENTER _____(609) 978-0600
TALLWOODS CARE CENTER _____(732) 237-2220
THE BAY AT MANAHAWKIN HEALTH AND REHAB CENTER (609) 597-8500
WILLOW SPRINGS REHAB AND HEALTHCARE CTR (732) 840-3700

PASSAIC COUNTY

ARBOR RIDGE REHAB & HEALTHCARE CENTER ___(973) 835-3871
ATLAS HEALTHCARE AT DAUGHTERS OF MIRIAM ___(973) 772-3700
ATRIUM POST ACUTE CARE OF WAYNE _____(973) 694-2100
ATRIUM POST ACUTE CARE OF WAYNEVIEW ____ (973) 305-8400
BARNERT SUBACUTE REHAB CENTER, LLC _____(973) 754-0999
CARE ONE AT WAYNE - SNF _____(973) 692-9500
COMPLETE CARE AT FAIR LAWN EDGE _____(973) 754-6700
COMPLETE CARE AT HAMILTON, LLC _____(973) 773-7070
COMPLETE CARE AT MILFORD MANOR LLC _____(973) 697-5640
DOCTORS SUBACUTE HEALTHCARE, LLC _____(973) 942-8899
HEALTH CENTER AT BLOOMINGDALE _____(973) 283-1700
HOLLAND CHRISTIAN HOME _____(973) 427-4087
LAKEVIEW REHABILITATION AND CARE CENTER____(973) 839-4500
LLANFAIR HOUSE CARE & REHAB CENTER _____(973) 835-7443
PHOENIX CENTER FOR REHAB AND PEDIATRICS _____(973) 839-2119
PREAKNESS HEALTHCARE CENTER _____(973) 585-2132
REGENCY GARDENS NURSING CENTER _____(973) 790-5800
ST JOSEPH'S HOME FOR ELDERLY _____(973) 942-0300

OST JOSEPH'S HOME FOR ELDERLY _____(973) 942-0300

SALEM COUNTY

CARNEYS POINT REHAB AND NURSING CENTER _ (856) 299-6800
EAGLEVIEW HEALTH AND REHABILITATION____(856) 451-5000
FRIENDS VILLAGE AT WOODSTOWN _____(856) 823-0238
GOLDEN REHABILITATION AND NURSING CENTER (856) 935-6677
SOUTHGATE HEALTH CARE CTR _____(856) 299-8900

SOMERSET COUNTY

ABINGDON CARE & REHABILITATION CENTER __ (732) 968-5500
ARBOR AT LAUREL CIRCLE, THE _____(908) 595-6500
BRIDGEWAY CARE AND REHAB CENTER AT BRIDGEWATER (908) 722-7022
BRIDGEWAY CARE AND REHAB CENTER AT HILLSBOROUGH (908) 281-4400
CARE ONE AT SOMERSET VALLEY _____(732) 469-2000
COMPLETE CARE AT GREEN KNOLL _____(908) 526-8600
COMPLETE CARE AT WILLOW CREEK _____(732) 246-4100
FELLOWSHIP VILLAGE _____(908) 829-6399
FOOTHILL ACRES REHAB & NURSING CENTER __ (908) 369-8711
MCAULEY HALL HEALTH CARE CENTE _____(908) 754-3663
N J EASTERN STAR HOME _____(908) 722-4140
PARKER AT SOMERSET, INC _____(732) 545-4200
REGENCY HERITAGE NURSING AND REHAB CENTER (732) 873-2000
REHAB AT RIVER'S EDGE _____(908) 526-8950
SKILLED NURSING AT FELLOWSHIP VILLAGE____(908) 580-3800
SOMERSET WOODS REHAB & NURSING CENTER_(732) 653-3000
STONEBRIDGE AT MONTGOMERY HEALTH CARE CENTER (609) 759-3654

SUSSEX COUNTY

BARN HILL CARE AND REHAB CENTER _____(973) 383-5600
BRISTOL GLEN _____(732) 932-9800
HOMESTEAD REHAB & HEALTH CARE CENTER __ (973) 948-5400
LIMECREST SUBACUTE AND REHAB CENTER ____ (973) 383-6200
UNITED METHODIST COMMUNITIES AT BRISTOL GLEN (973) 300-5788
VALLEY VIEW REHAB AND HEALTHCARE CTR ____ (973) 383-1450

UNION COUNTY

ADROIT CARE REHAB AND NURSING CENTER ___(732) 499-7927
ARISTACARE AT NORWOOD TERRACE _____(908) 769-1400
ARISTACARE AT PARKSIDE _____(908) 862-3399
ASHBROOK CARE & REHABILITATION CENTER __ (908) 889-5500
AUTUMN LAKE HEALTHCARE AT BERKELEY HEIGHTS (908) 897-1000
CARE CONNECTION RAHWAY _____(732) 499-6460
CHILDRENS SPECIALIZED HOSPITAL MOUNTAINSIDE (908) 233-3720
CLARK NURSING AND REHAB CNTR _____(732) 396-7100
COMPLETE CARE AT WESTFIELD, LLC _____(908) 233-9700
COMPLETE CARE AT WOODLANDS _____(908) 753-1113
CONTINUING CARE AT LANTERN HILL _____(908) 516-9400
CORNELL HALL CARE & REHABILITATION CENTER(908) 687-7800
CRANFORD PARK REHAB & HEALTHCARE CENTER(908) 276-7100
CRANFORD REHAB & NURSING CENTER _____(908) 272-6660
ELIZABETH NURSING AND REHAB _____(908) 354-0002
ELMORA HILLS HEALTH & REHAB CENTER ____ (908) 353-1220
JFK HARTWYCK AT CEDAR BROOK _____(908) 754-3100
PLAZA HEALTHCARE & REHABILITATION CENTER (908) 354-1300
PROMEDICA SKILLED NURSING & REHAB - MOUNTAINSIDE (908) 654-0020
RUNNELLS CENTER FOR REHAB & HEALTHCARE (908) 771-5700
SOUTH MOUNTAIN HC _____(908) 688-3400
SPRING GROVE REHAB AND HEALTHCARE CENTER(908) 464-8600
TRINITAS HOSPITAL _____(908) 994-7525

WARREN COUNTY

CLOVER REST HOME _____(908) 496-4477
COMPLETE CARE AT BRAKELEY PARK, LLC _____(908) 859-2800
COMPLETE CARE AT PHILLIPSBURG, LLC _____(908) 454-2627
FOREST MANOR HCC _____(908) 459-4128
LOPATCONG CENTER _____(908) 859-0200
WARREN HAVEN REHAB AND NURSING CENTER_ (908) 453-7700

LONG TERM CARE - NURSING HOME

ATLANTIC COUNTY

COMPLETE CARE AT LINWOOD, LLC _____(609) 927-6131
EXCEL CARE AT EGG HARBOR _____(609) 453-3200
EXCEL CARE AT THE PINES _____(609) 344-8900
HAMMONTON CENTER FOR REHAB AND HEALTHCARE(609) 567-3100
HEALTH CENTER AT GALLOWAY, THE _____(609) 748-9100
MEADOWVIEW NURSING AND REHAB CENTER_(609) 645-5955
OUR LADYS CENTER FOR REHAB & HEALTHCARE (609) 646-2450
PREFERRED CARE AT ABSECON _____(609) 646-5400
RENAISSANCE PAVILION _____(609) 404-3287
ROYAL SUITES HEALTH CARE & REHAB _____(609) 748-9900
SEASHORE GARDENS LIVING CENTER _____(609) 404-4848
THE SHORES _____(732) 922-9800

BERGEN COUNTY

ACTORS FUND HOME, THE _____(201) 871-8882
ALARIS HEALTH AT THE CHATEAU _____(201) 226-9600
ALLENDALE REHAB AND HEALTHCARE CENTER (201) 825-0660
ATLAS REHAB AND HEALTHCARE AT MAYWOOD (201) 843-8411
ATRIUM POST ACUTE CARE OF PARK RIDGE ____ (201) 505-1777
BERGEN NEW BRIDGE MEDICAL CENTER ____ (201) 967-4000
BUCKINGHAM AT NORWOOD, THE _____(201) 768-6222
CARE ONE AT CRESSKILL _____(201) 567-9310
CARE ONE AT NEW MILFORD _____(201) 967-1700
CARE ONE AT ORADELL _____(201) 967-0002
CARE ONE AT RIDGEWOOD AVENUE _____(201) 652-1950
CARE ONE AT TEANECK _____(201) 862-3300
CARE ONE AT VALLEY _____(201) 664-8888
CARE ONE AT WELLINGTON _____(201) 487-4900
CHRISTIAN HEALTH CARE CENTER _____(201) 848-5200
COMPLETE CARE AT INGLEMOOR, LLC _____(201) 568-0900
DELLRIDGE HEALTH & REHAB CENTER _____(201) 265-5600
EMERSON HEALTH CARE CENTER _____(201) 265-3700
FAMILY OF CARING HEALTHCARE AT RIDGEWOOD (201) 445-8200
FAMILY OF CARING HEALTHCARE AT TANAFLY, LLC(201) 567-7800
HACKENSACK MERIDIAN HEALTH NURSING & REHAB (201) 646-1166
HACKENSACK MERIDIAN HEALTH PROSPECT HEIGHTS CARE (201) 678-1800
JEWISH HOME AT ROCKLEIGH _____(201) 784-1414
MAPLE GLEN CENTER _____(201) 797-9522
N J VETERANS MEM HOME PARAMUS _____(201) 634-8212
OAKLAND REHAB AND HEALTHCARE CENTER_(201) 337-3300
RIDGEWOOD CENTER _____(201) 447-1900
TEANECK NURSING CENTER _____(201) 833-2400
WOODCLIFF LAKE HEALTH & REHAB CENTER_(201) 391-0900

BURLINGTON COUNTY

ASPEN HILLS HEALTHCARE CENTER _____(609) 836-6000
CAMBRIDGE REHAB AND HEALTHCARE CENTER (856) 235-1214
CARE ONE AT EVESHAM _____(856) 396-0005
CARE ONE AT MOORESTOWN _____(856) 914-0444
COMPLETE CARE AT BURLINGTON WOODS, LLC (609) 387-3620
COMPLETE CARE AT MARCELLA, LLC _____(609) 387-9300
LAUREL BROOK REHAB AND HEALTHCARE CENTER (856) 235-7100
MASONIC VILLAGE AT BURLINGTON _____(609) 239-3900
MEDFORD CARE CENTER _____(856) 983-8500
MEDFORD LEAS _____(609) 654-3000
MOUNT HOLLY REHAB & HEALTHCARE CENTER (609) 914-8880
PALACE REHAB AND CARE CENTER, THE ____ (856) 779-1500
PROMEDICA TOTAL REHAB + (MOORESTOWN)_(856) 291-4800
RIVERVIEW ESTATES REHAB AND SENIOR LIVING CENTER (856) 829-2274
STERLING MANOR _____(856) 779-9333
WILEY MISSION _____(856) 983-0411
WILLOWBROOKE COURT SKILLED CARE AT EVERGREENS (856) 439-2000
WYNWOOD REHAB AND HEALTHCARE CENTER (856) 829-9000

CAMDEN COUNTY

ABIGAIL HOUSE FOR NURSING & REHAB _____(856) 365-8500
ALLEGRIA AT THE FOUNTAINS _____(856) 753-2000
ARISTACARE AT CHERRY HILL _____(856) 663-9009
AVISTA HEALTHCARE _____(856) 675-3000
BARCLAYS REHAB AND HEALTHCARE CENTER_(856) 428-6100
BERLIN REHAB AND HEALTHCARE CENTER ____ (856) 322-3600
COLLINGSWOOD MANOR _____(732) 922-9800
COMPLETE CARE AT KRESSON VIEW, LLC ____ (856) 596-1113
COMPLETE CARE AT VOORHEES, LLC _____(856) 751-1600
ECHELON CARE AND REHAB _____(856) 346-1200
ELMWOOD HILLS HEALTHCARE CENTER LLC ___(856) 374-6600
LAUREL MANOR HEALTHCARE AND REHAB CENTER (856) 784-2400
LIONS GATE _____(856) 667-3100
MAJESTIC CENTER FOR REHAB & SUB-ACUTE CARE (856) 342-7600
PREMIER CADBURY OF CHERRY HILL _____(856) 667-4550
PROMEDICA SKILLED NURSING & REHAB - VOORHEES WEST (856) 454-9100
RIVERFRONT REHAB AND HEALTHCARE CENTER(856) 665-8844
SILVER HEALTHCARE CENTER _____(856) 795-3131
ST MARY'S CENTER FOR REHAB & HEALTHCARE (856) 874-5300
UNITED METHODIST COMMUNITIES AT COLLINGSWOOD (856) 854-4331
VOORHEES PEDIATRIC FACILITY _____(856) 346-3300

CAPE MAY COUNTY

AUTUMN LAKE HEALTHCARE AT OCEANVIEW __ (609) 624-3881
COMPLETE CARE AT COURT HOUSE, LLC ____ (609) 465-7171
CREST HAVEN NURSING AND REHAB CENTER____(609) 465-1260
NORTH CAPE CENTER _____(609) 898-8899
OCEANA REHABILITATION AND NC _____(609) 465-7633
PELICAN POINTE POST ACUTE NURSING & REHAB (609) 898-0677
UNITED METHODIST COMMUNITIES AT THE SHORES (609) 399-8505

CUMBERLAND COUNTY

BISHOP MCCARTHY CENTER FOR REHAB & HEALTHCARE (856) 692-2850
CUMBERLAND MANOR NURSING AND REHAB CENTER (856) 455-8000
LINCOLN SPECIALTY CARE CENTER _____(856) 692-8080
MILLVILLE CENTER _____(856) 327-2700
NEW JERSEY VETERANS MEMORIAL VINELAND_(856) 405-4207
SOUTH JERSEY EXTENDED CARE _____(856) 455-2100

ESSEX COUNTY

ALARIS HEALTH AT CEDAR GROVE _____(973) 571-6600
ALARIS HEALTH AT ST MARY'S _____(973) 266-3000
ALARIS HEALTH AT WEST ORANGE _____(973) 324-3000
ALLIANCE CARE REHAB AND NURSING CENTER (973) 371-7878
ARBOR GLEN CENTER _____(973) 256-7220
ATRIUM POST ACUTE CARE OF LIVINGSTON ____ (973) 758-8200
BROADWAY HOUSE FOR CONTINUING ____ (973) 268-9797
BROOKHAVEN HEALTH CARE CENTER _____(973) 676-6221
CANTERBURY AT CEDAR GROVE _____(973) 239-7600
CARE ONE AT LIVINGSTON _____(973) 758-9000
CLARA MAASS MEDICAL CENTER _____(973) 450-2963
COMPLETE CARE AT CEDAR GROVE _____(973) 239-9300
COMPLETE CARE AT ORANGE PARK _____(973) 677-1500
COMPLETE CARE AT SUMMIT RIDGE _____(973) 736-2000
DAUGHTERS OF ISRAEL PLEASANT VALLEY HOME (973) 731-5100
FAMILY OF CARING HEALTHCARE AT MONTCLAIR (973) 783-9400
FOREST HILL HEALTH CARE CENTER _____(973) 482-5000
GROVE PARK HEALTHCARE AND REHABILITATION (973) 672-1700
HACKENSACK MERIDIAN HEALTH WEST CALDWELL (973) 226-1100
INGLEMOOR REHAB AND CARE CENTER OF LIVING (973) 994-0221
JOB HAINES HOME FOR AGED PEOPLE _____(973) 743-0792
LITTLE NURSING HOME _____(973) 744-5518
LUTHERAN SOCIAL MINISTRIES CRANES MILL____(973) 276-3018
MONTCLAIR CARE CENTER _____(973) 746-4616
NEW COMMUNITY EXTENDED CARE FACILITY____(973) 624-2020
NEW VISTA NURSING & REHABILITATION CTR_(973) 484-4222
PARK CRESCENT HEALTHCARE & REHAB CENTER(973) 674-2700

SINAI POST ACUTE NURSING AND REHAB CENTER(973) 483-6800
ST CATHERINE OF SIENA _____(973) 226-1577
ST JOSEPH'S HEALTHCARE AND REHAB CENTER(973) 754-4800
STRATFORD MANOR REHAB AND CARE CENTER (973) 731-4500
WHITE HOUSE HLTHCR & REHAB CTR _____(973) 672-6500
WINCHESTER GARDENS HEALTH CARE CENTER (973) 762-5050

GLOUCESTER COUNTY

ADVANCED SUBACUTE REHAB CENTER AT SEWELL (856) 468-2500
ATRIUM POST ACUTE CARE OF WOODBURY ____ (856) 345-1200
CEDAR GROVE RESPIRATORY AND NURSING CENTER (856) 875-0100
DEPTFORD CENTER FOR REHAB AND HEALTHCARE (856) 845-9400
JEFFERSON HEALTH CARE CENTER _____(856) 557-0102
PITMAN MANOR _____(732) 922-9800
PROMEDICA SKILLED NURSING & REHAB - WASHINGTON TWP (856) 218-4200
PROMEDICA SKILLED NURSING & REHAB - WEST DEPTFORD (856) 848-9551
SHADY LANE GLOUCESTER CO HOME _____(856) 224-6979
UNITED METHODIST COMMUNITIES AT PITMAN (856) 589-7800

HUDSON COUNTY

ACCLAIM REHAB AND NURSING CENTER ____ (201) 451-9000
ALARIS HEALTH AT BELGROVE _____(973) 844-4800
ALARIS HEALTH AT CASTLE HILL _____(201) 348-0818
ALARIS HEALTH AT HAMILTON PARK _____(201) 653-8800
ALARIS HEALTH AT KEARNY _____(201) 955-7067
ALARIS HEALTH AT THE FOUNTAINS _____(201) 863-8866
HARBORAGE, THE _____(201) 854-5400
HOBOKEN UNIVERSITY MEDICAL CENTER TCU_(201) 418-1000
HUDSON HILLS SENIOR LIVING, LLC _____(201) 867-3585
HUDSONVIEW HEALTH CARE CENTER ____ (201) 861-4040
MANHATTANVIEW NURSING HOME _____(201) 325-8400
OPTIMA CARE HARBORVIEW _____(201) 963-1800
PEACE CARE ST ANN'S _____(201) 433-0950
PEACE CARE ST JOSEPH'S _____(201) 653-8300

HUNTERDON COUNTY

COUNTRY ARCH CARE CENTER _____(908) 735-6600
HUNTERDON CARE CENTER _____(908) 788-9292
LITTLE BROOK NURSING AND CONVALESCENT HOME (908) 832-2220
ROLLING HILLS CARE CENTER _____(908) 236-2011

MERCER COUNTY

ATRIUM POST ACUTE CARE OF HAMILTON ____ (609) 631-2555
AVANT REHABILITATION AND CARE CENTER ____ (609) 656-9291
BELLE CARE NURSING AND REHAB CENTER ____ (609) 396-2646
CLOVER MEADOWS HEALTHCARE AND REHAB_(609) 896-1494
COMPLETE CARE AT MERCERVILLE LLC _____(609) 586-7500
GREENWOOD HOUSE HOME FOR THE JEWISH AGED (609) 883-5391
HAMILTON CONTINUING CARE _____(609) 588-0091
HAMILTON GROVE HEALTHCARE AND REHAB, LLC_(609) 588-5800
MEADOW LAKES _____(609) 448-5380
MORRIS HALL/ST JOSEPH'S NURSING CENTER (609) 896-0006
PREFERRED CARE AT HAMILTON _____(609) 586-1114
PRINCETON CARE CENTER _____(609) 924-9000
RIVERSIDE NURSING AND REHAB CENTER ____ (609) 394-3400
SPRING HILLS POST ACUTE PRINCETON ____ (609) 987-1221
ST LAWRENCE REHAB CENTER _____(609) 896-9500
WATERS EDGE HEALTHCARE & REHAB _____(609) 393-8622

MIDDLESEX COUNTY

ALAMEDA CENTER FOR REHAB AND HEALTHCARE (732) 442-9540
ARISTACARE AT CEDAR OAKS _____(732) 287-9555
BRIGHTON GARDENS OF EDISON _____(732) 561-4055
CARE ONE AT EAST BRUNSWICK _____(732) 967-0100
CARE ONE AT THE HIGHLANDS _____(908) 754-7100
COMPLETE CARE AT PARK PLACE, LLC _____(732) 274-1122
CRANBURY CENTER _____(609) 860-2500
ELMS OF CRANBURY, THE _____(609) 395-0641
EMBASSY MANOR AT EDISON NURSING AND REHAB (732) 985-1500